

DINO POWERS



CONTENTS

- Intro
- DINO POWERS, IP INTRODUCE
- Synopsis
- The title of the episode
- Characters
 - Human
 - DinosAur
 - Mechanic
- Business & marketing

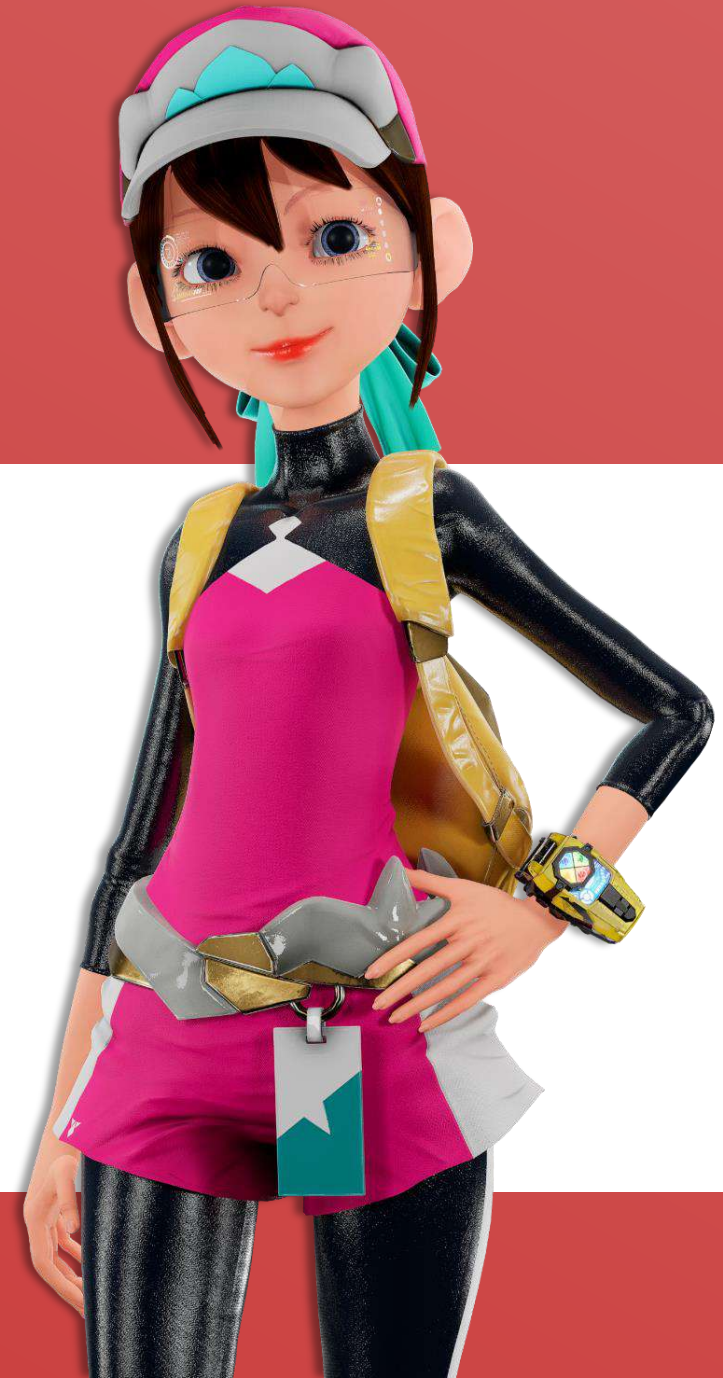




“DOFALA Studio” specializes in contents creation. Currently, the animation team, business team, and the sound team are operating from our head office in Korea. We have also established a branch in Indonesia to produce shows through collaboration with our head office team.

In addition, we are currently expanding the number of employees for various projects.

We are actively contributing to the domestic and international content industry through innovative usage of animation and music.



DINO POWERS, Project Overview



Format	TV Series & New Media
Length	11min X 26ep (Season 1) 11min X 26ep (Season 2)
Technique	HD FULL 3D Animation
Genre	Comedy / Action / Robot
Target	6~10 years old
Product	DOFALA Inc. EAKI (China Toy Company)
Launching time	Mid-2022

DINO POWERS, IP Introduce

Various types of mechanisms preferred by boys of target age group

Dinosar



VEHICLES



TRANSFORMATION ROBOTS

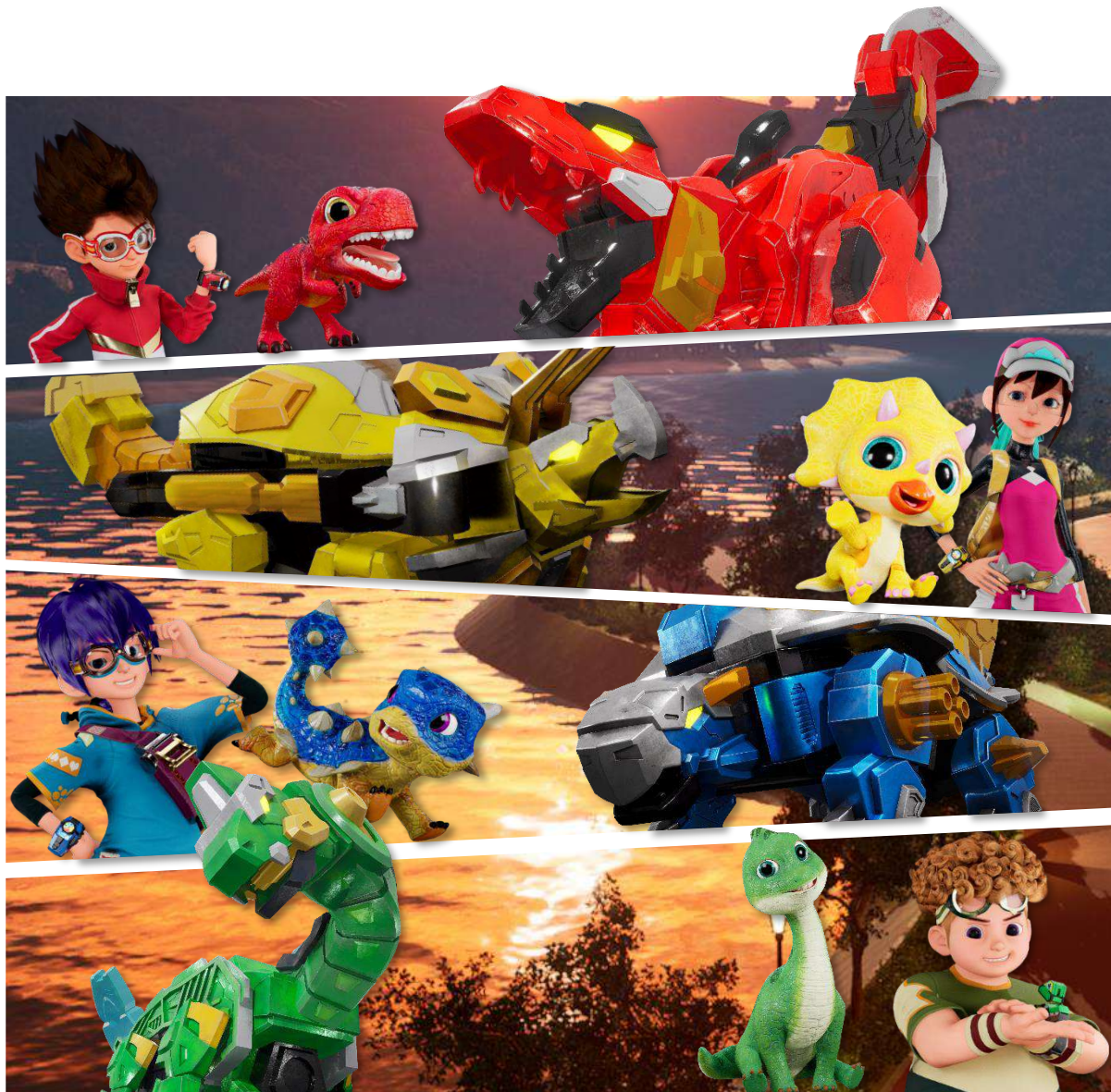


Combined ROBOTS



Synopsis

Trailer Preview 



The only existence that can save the world, Dino Powers!!

In the not too distant future, science and technology are rapidly developing, and people live by raising dinosaur's pets that have been saved by genetic engineering. One of them is Choi Kang, an ordinary elementary school student who lives with a cute dinosaur Tyranno who is treated like family.

One night, with the sound of knocking on the window, the cube flies in, shines brightly, turns into a bracelet, and chooses the strongest wrist. It doesn't take long for the main character to realize that the power of a cube bracelet can transform a Tyrannosaurus into a mechanized dinosaur and that special goggles can be used to see a Simon that permeates humans' daily lives and causes accidents.

The present world where dynos and humans coexist and the parallel world on the other side where monsters live. The Cube chose four heroes to stop Anti-Ti from breaking the boundaries between the two worlds. They work together to form Dinosaurs and fight against monsters!

Dinopowers, the only being who will save the world against the antis who want to break down the boundaries between the parallel world and the human world, begins!

The title of the episode.



Season 1 (Part 26)

EPISODE 1 Cube bracelet that came to me one day

EPISODE 2 Stop drowsy driving!

EPISODE 3 A fearful proposal

EPISODE 4 I'm starving!

EPISODE 5 A trap of Like

EPISODE 6 A black hand underwater

EPISODE 7 A dangerous construction site

EPISODE 8 A melancholic singing voice

EPISODE 9 A god of study

EPISODE 10The power of Anti

EPISODE 11A world without picture

EPISODE 12A nightmare of Valentine's day

EPISODE 13Attack of a giant grasshopper

EPISODE 14Can't stop laughing!

EPISODE 15Stop shopping!

EPISODE 16A city full of anger

EPISODE 17Nature swallowed by fear

EPISODE 18Scream of sorrow

EPISODE 19The end of pleasure

EPISODE 20Unknown world

EPISODE 21A series of hardship

EPISODE 22Hardship of Muke and Volta

EPISODE 23The Dino Powers turned the table

EPISODE 24The ruler of the parallel world

EPISODE 25Anti and Dino Bots' battle

EPISODE 26The final battle

To be continued in season 2

Characters



Human

KAY with Tyrannosaurus

A twelve-year-old passionate boy full of justice. He is so active that he often makes mistakes or causes inconvenience to others.

His academic performance is poor, but he is second to none in games.

Sometimes he is stubborn, but he learns cooperation by confronting monsters with the members of Dino Powers.

AR Goggles

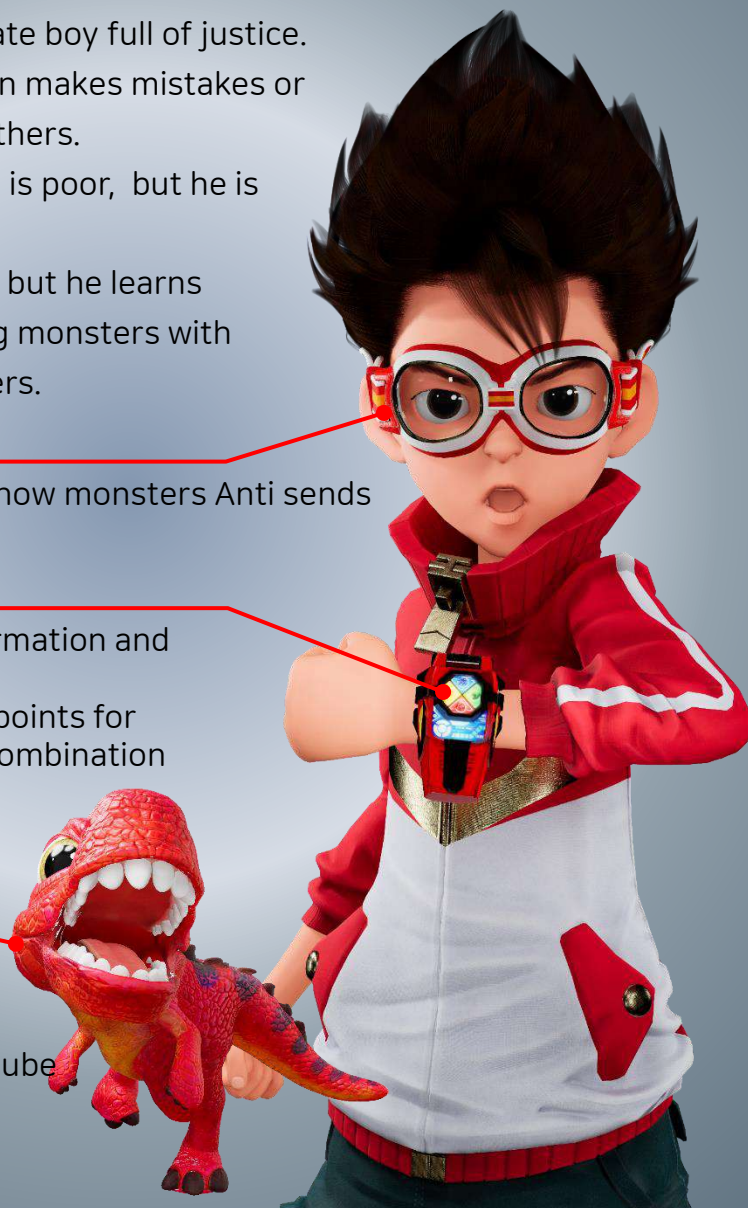
- A goggle that show monsters Anti sends

Cube watch

- Metadino transformation and Metabot summon
- Accumulate Metapoints for transformation/ combination

Tyranno

- Choigang's pet dinosaur
- Transformation into Meta-tyranno through Cube



Choi's skateboard



Skateboard

His means of transport and fashion item. A skateboard with a dinosaur emitting fire. This design is used for various design elements in animation!



Firo

(Before transformation, spaceship)

It is his mechanical partner who can change from a small spacecraft form to a large spacecraft form. He transforms into a spaceship and becomes a Metabot Firo!



Choi's partner, Firo



Human

BANDI with Triceratops

A thirteen year-old girl. she looks pretty but has a different personality and doesn't get along well with girls her age. She dreams of becoming a game master and plays games every day while girls her age care about their appearance. She is a best friend who grew up with Choi Kang in the same neighborhood and suffers from a lack of strength when confronting strong monsters but breaks through the crisis with brilliant ideas



Bandi Rollerblade



Rollerblade

Bandi wears inline skates as a major moving item and considers safety through wearing arm and knee guard



Volta (Before transformation, SUV)

Bandi's mechanical partner Volta. He usually looks like a yellow SUV and turns into a metabot in an emergency to face the enemy!



Bandi's partner, Volta



Human

SEAN with Ankylosaurus

Thirteen-year-old boy. Always calm and silent. Maybe that's why he's so popular with girls. He has the nerve to make lame jokes at times.

Unlike "Choigang" where emotions precede, he always thinks and acts coolly and rationally. He is weak in power, but when confronted by monsters, he identifies weaknesses with cool judgment.

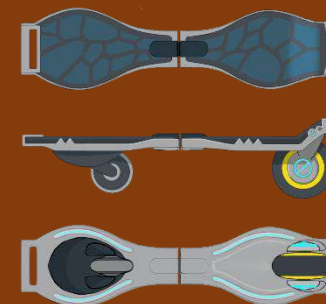


Siwon's Caster board



Caster board

It is Siwon's mean of transportation item. At the beginning of the animation Siwon and Choigang compete on the way to the school on skateboards.



Loca

(Before transformation, tank)

Siwon's mechanical partner, Loca. He is shaped like a blue tank. When he transforms into a robot, the tank's gun part is also used as a weapon!



Siwon's partner, Loca



Human

TOBY with Brachiosaurus

Twelve years old, he is fat, slow, and cowardly. He's a food lover, but he never eats everything. He's pretty picky. He looks for food all the time and even when he fights monsters, he can't help but eat snacks.



Donghae's Heelys



Heelys

The shoes Donghae usually wears turns into a means of transportation. He wears them like normal shoes but when he needs to go somewhere faster, he uses them as heelys.

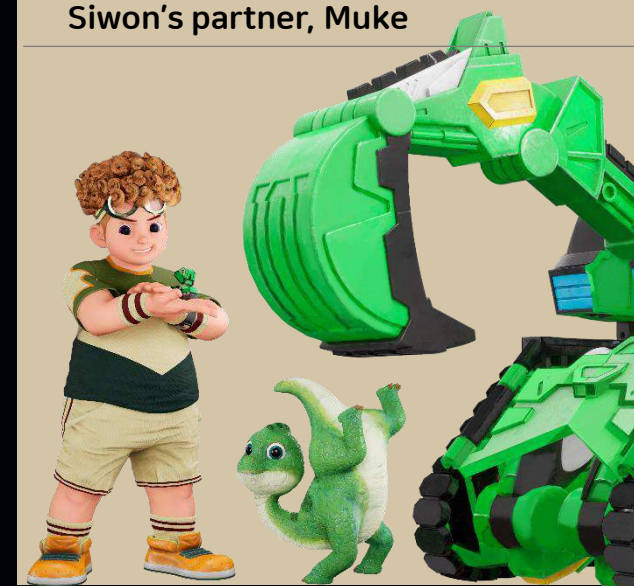


Muke (Before transformation, forklift)

The mechanical partner of the Donghae is a forklift, a type of heavy equipment, and has a huge bucket. Even when he transforms into a metabot, the bucket acts as a weapon.



Siwon's partner, Muke



4 Different Dinosaurs
4 Different color

Tyrannosaurus

Choigang's pet dinosaur.
He transforms into meta-tyranno with
the cube bracelet.



Triceratops

Bandi's pet dinosaur.
She transforms into meta-trice
with the cube bracelet.



Ankylosaurus

Siwon's pet dinosaur
He transforms into meta-ankylo
with the cube bracelet.

Brachiosaurus

Donhae's pet dinosaur.
He transforms into meta-Brachi with
the cube bracelet.

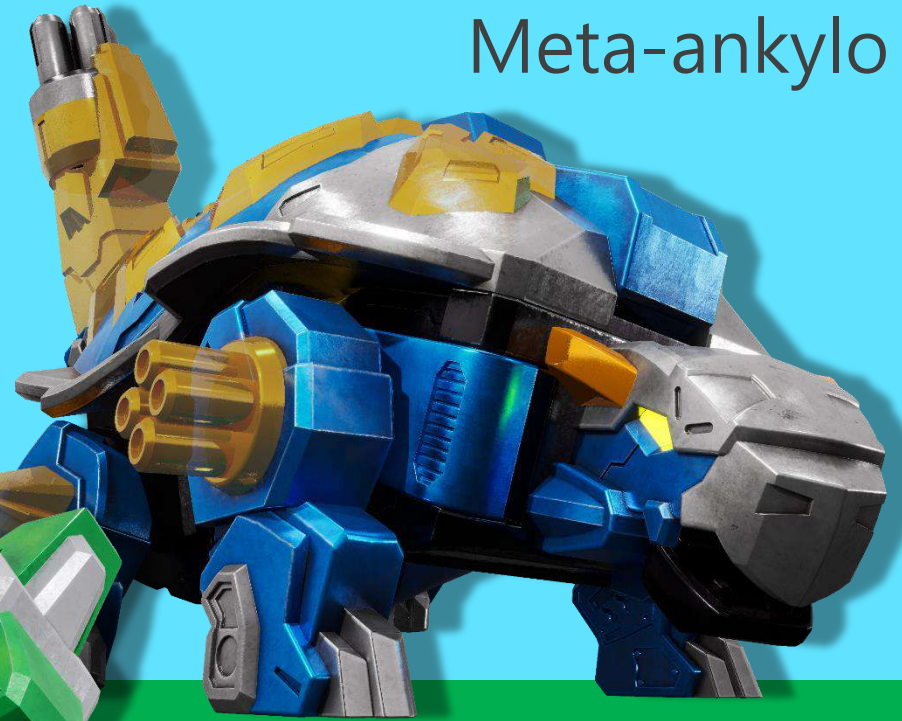


4 Different Dinosaurs
4 Different color



Meta-tyranno

Meta-ankylo



Meta-Brachi



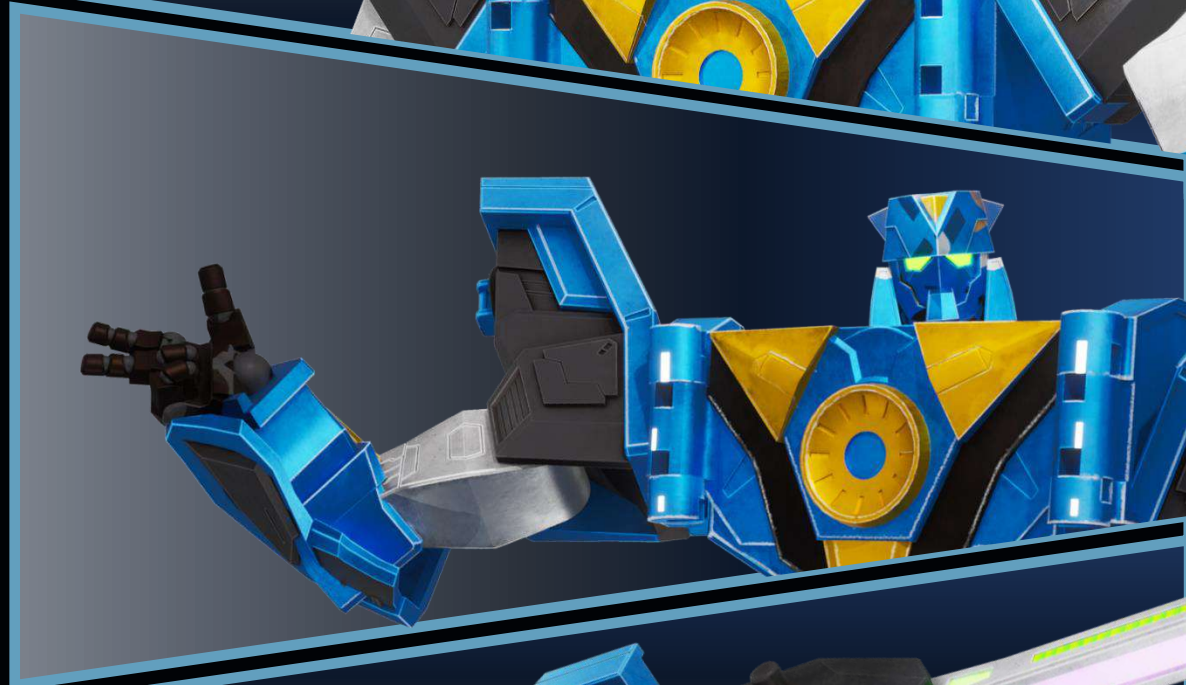
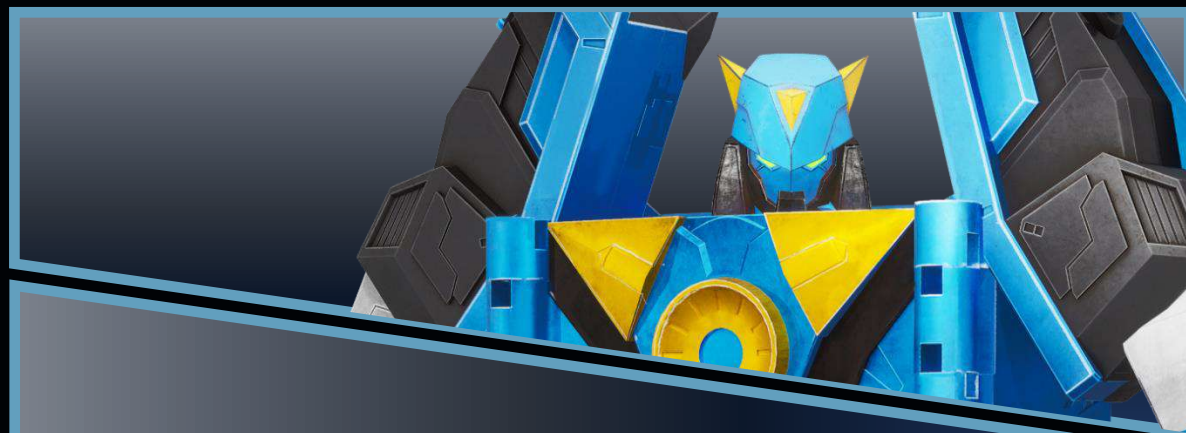
Meta-Trice



FIRO Spacecraft ▶ Metabot ver.



LOKA Tank ▶ Metabot ver.



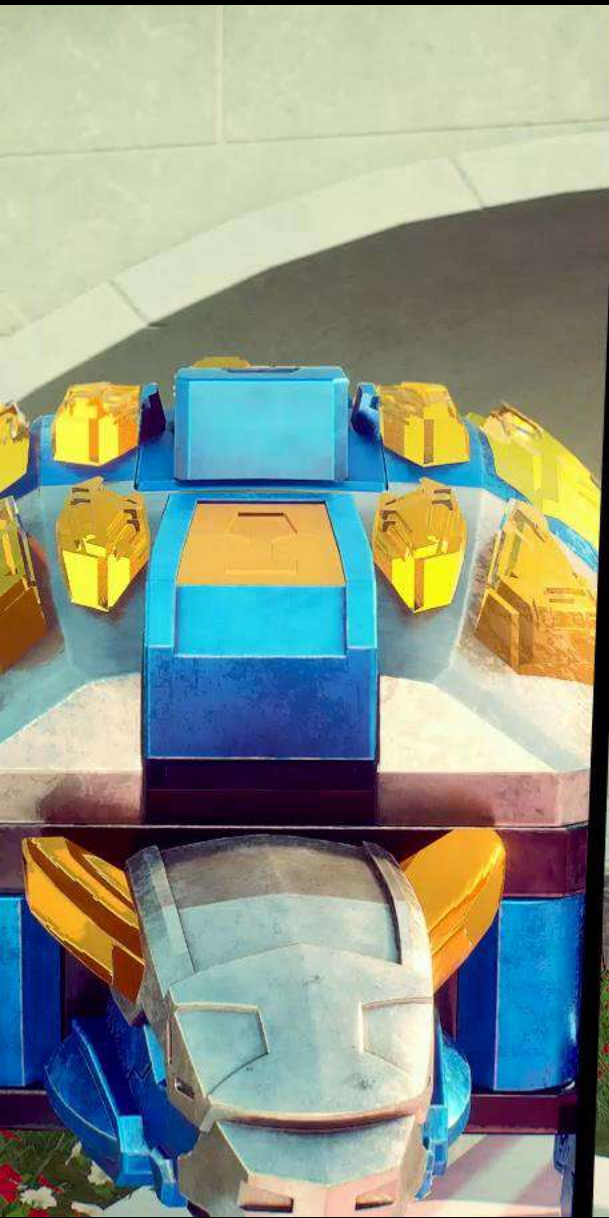
VOLTA SUV ▶ Metabot ver.



MUKE Forklift ▶ Metabot ver.



Screen shot



Screen shot



Screen shot



Screen shot





**dinoporwers
Business
& marketing**

Business Direction



Video Business (Broadcast, VOD etc)

- Home and abroad TV broadcast or OTT platform broadcast
- VOD business
- New Media business



Toy and Merchandise Business

- Toy distribution
- IP licensing partnership build
- Dino Powers MD commercialization



Mobile and PC Game Business

- Dino Powers IP mobile and PC games
- Offline card board game



Promotion Through Partnership

- Promotion through partnership with various companies and institutions

Business Direction

1. Video Business _ OTT & TV

OTT

- Contacting OTT platform for stable service and promotional effect through batch launch at home and abroad.
- When applying OTT platform, can target global markets simultaneously.



TV

- Preparing VOD services through domestic terrestrial channels and CATV broadcasts and IPTV



- In talks with various global channels such as Disney Asia Pacific, PT. Spectrum, and Warner Media regarding overseas TV broadcasting

Business Direction

1. Video Business _ New Media



YouTube

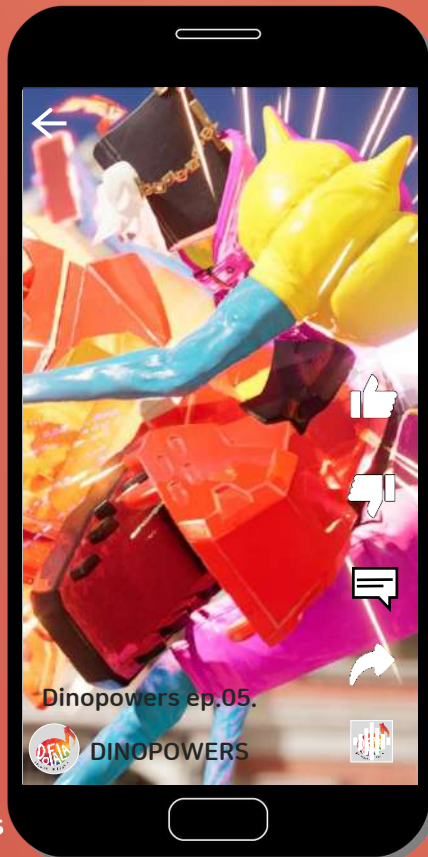


Instagram

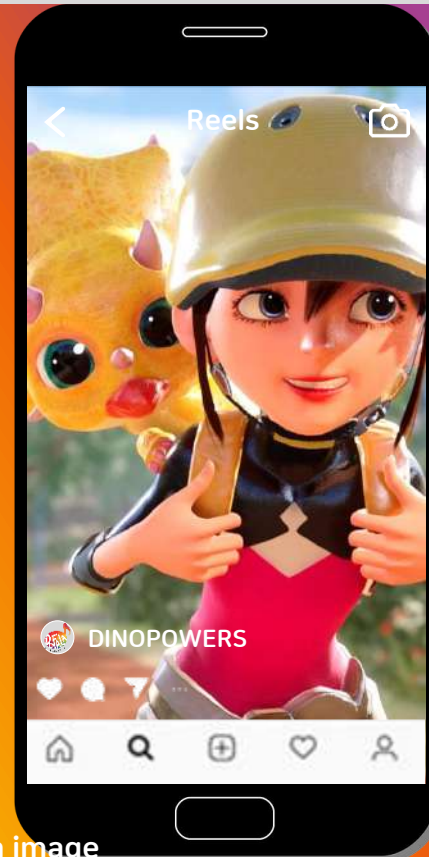


TikTok

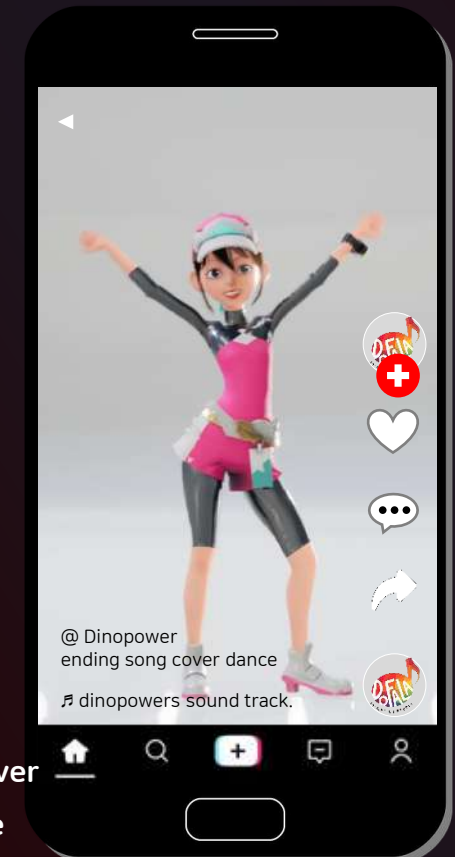
Expand the advertising and promotional effect on content and maximize advertising revenue through content uploads that suit each platform most, such as YOUTUBE, INSTAGRAM, and TIKTOK.



#episode
#shorts
#highlights



#daylife
#promotion image



#parody
#dance cover
#challenge

2. Toy and commercialization business _ Main toys



**EAKI_Toy manufacturing in China
and coproduction partner**

#Main toy manufacturing #Selling toy in China

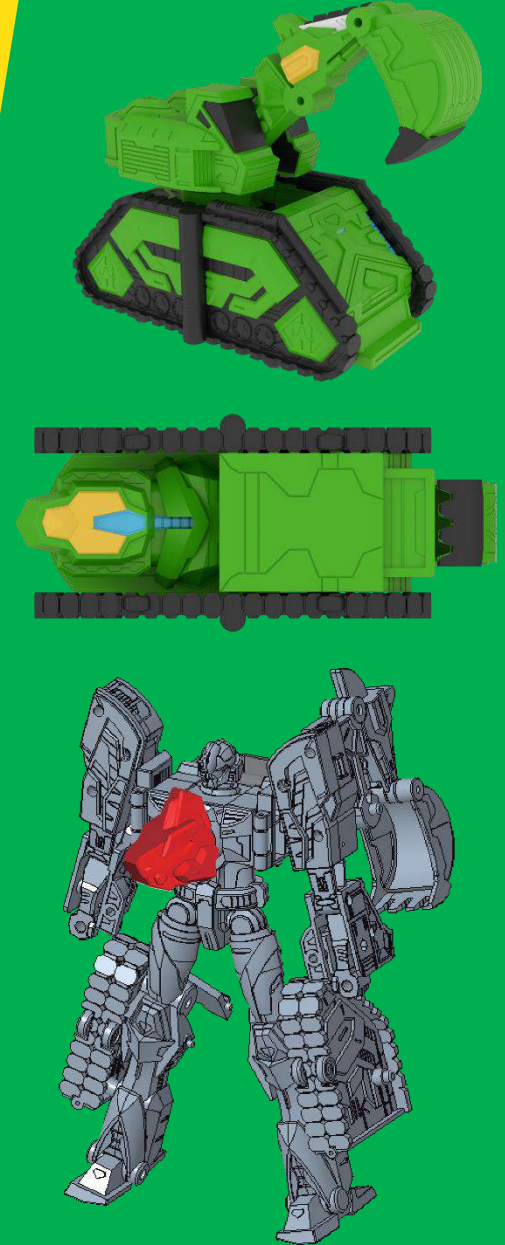
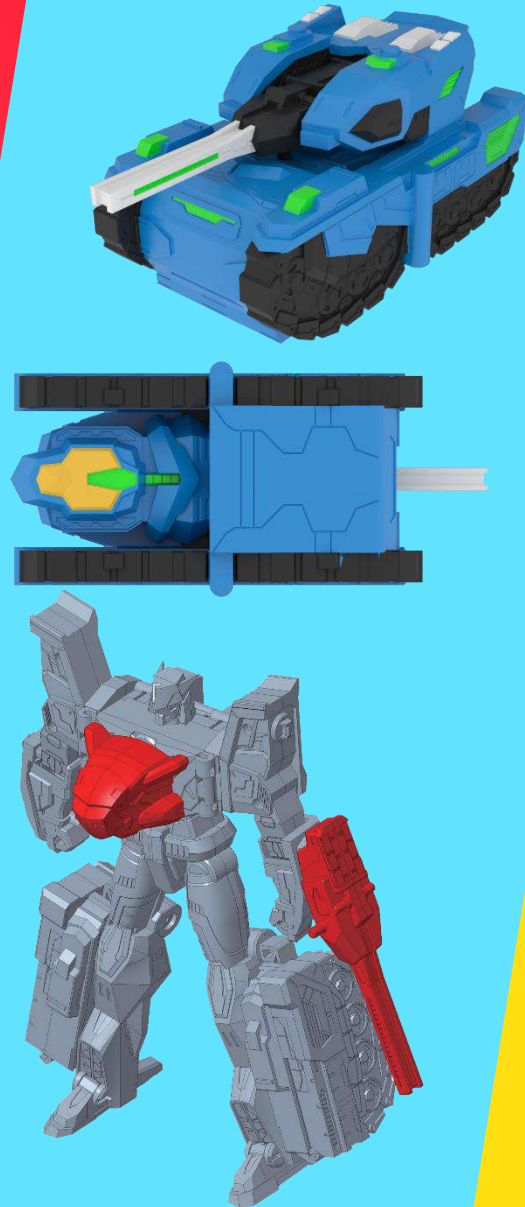


DOFALA Inc_Dino Powers animation production

#Animation production #Home and abroad MD distributor

The Chinese co-production company " EAKI" will produce the main toy of Dino Powers and carry out the domestic and foreign toy distribution business through DOFALA Inc

2. Toy and commercialization business _ Main toys



2. Toy and commercialization business _ Main toys

A total of 18 products (18 types of SKU) including Metadino and Metabot will be released.

#4 in 1 transformation

#Front

#4 in 1 transformation

#Back



Business Direction

2. Toy and Commercialization Business_Commercialization



DOFALA Inc is engaged in sales activities for the launch and distribution of Dino Powers licensed products through various domestic and foreign partners. In addition, we are making great efforts to present a win-win strategy through corporate, institutional, and brand alliances.



Business Direction

3. Mobile and PC Game Business



Mobile Game



PC Game



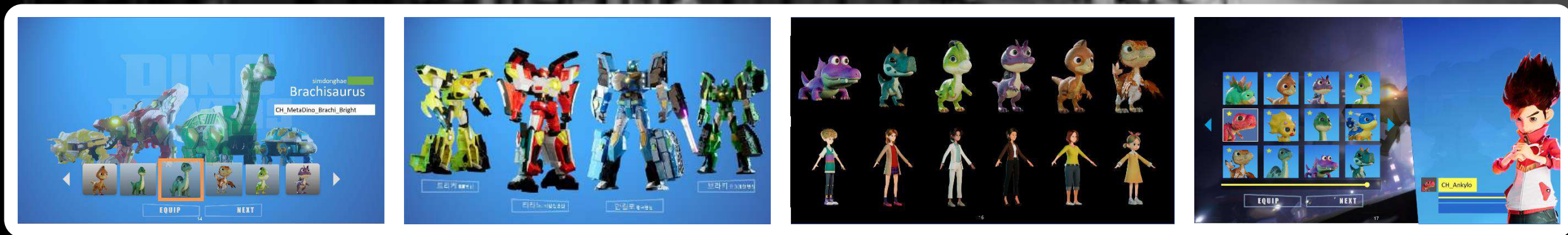
VR Game
AR Game etc.

Dino Powers is an animation produced through Unreal Engine, which is widely used for game production and has the advantage of being able to use animation production sources for game production such as mobile games, PC games, and VR

Business Direction

3. Mobile and PC Game Business

Launching PC and mobile games that reflect the animation characters and worldviews of Dino Powers.



Business Direction

3. Mobile and PC Game Business

By launching an AR card with the theme of Dino Power, target the target age group by implementing AR content viewers and AR games.



Business Direction

4. Promotion Through Partnership

Sports Club Partnership Marketing



Youtube Creator Partnership Marketing



Brand Partnership Marketing



*** This is an example image edited for reference, not a specific brand.

Details

- Maximize promotional effects through partnerships with various industries
- Expanding the frequency of exposure through various media through alliance effects
- Consider various affiliated marketing plans reflecting themes, backgrounds, and characters in animation



**dinoporwers
artwork**

◆ Character [Choigang]



Choigang_01



Choigang_02



Choigang_03



Choigang_04

◆ Character [Bandi]



Bandi_01



Bandi_02



Bandi_03



Bandi_04

◆ Character [Siwon]



Siwon_01



Siwon_02



Siwon_03



Siwon_04

◆ Character [Donghae]



Donghae_01



Donghae_02



Donghae_03



Donghae_04

◆ Dinosaur [Tyranno]



Tyranno_01



Tyranno_02



Tyranno_03



Tyranno_04

◆ Dinosaur [Tricera]



Tricera_01



Tricera_02



Tricera_03



Tricera_04

◆ Dinosaur [Ankylo]



Ankylo_01



Ankylo_02



Ankylo_03



Ankylo_04

◆ Dinosaur [Brachi]



Brachi_01



Brachi_02



Brachi_03



Brachi_04

◆ Dinobot [Meta Tyranno]



Meta Tyranno_01



Meta Tyranno_02

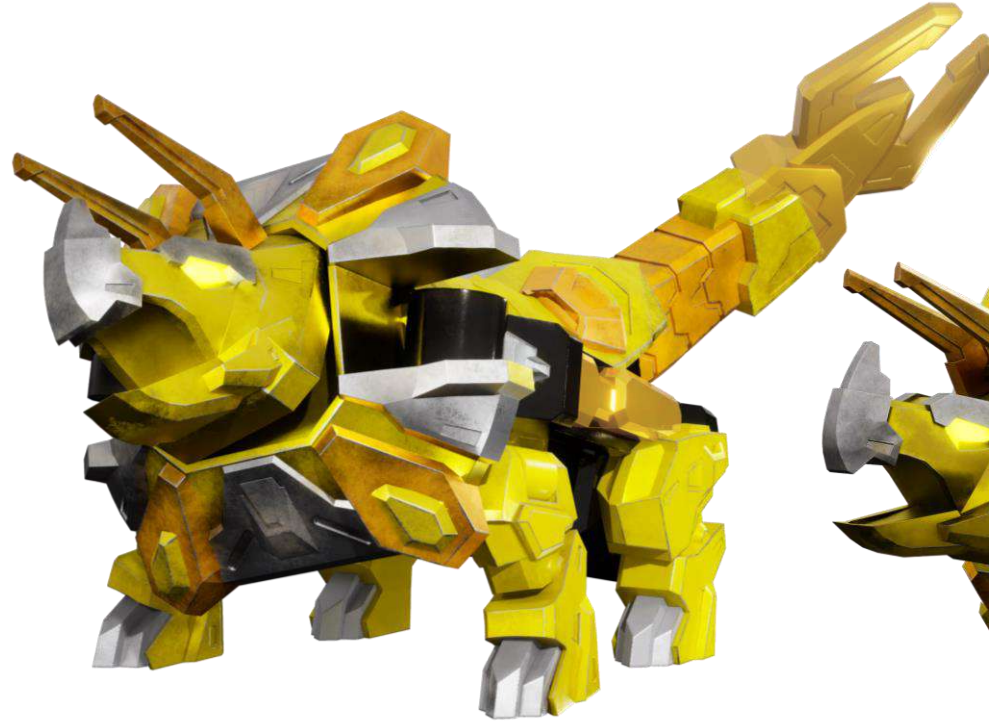


Meta Tyranno_03

◆ Dinobot [Meta Tricera]



Meta Tricera_01



Meta Tricera_02



Meta Tricera_03

◆ Dinobot [Meta Ankylo]



Meta Ankylo_01



Meta Ankylo_02



Meta Ankylo_03

◆ Dinobot [Meta Brachi]



Meta Brachi _01



Meta Brachi _02



Meta Brachi _03

◆ Metabot [Firo]



Firo_01



Firo_02



Firo_03

◆ Metabot [Volta]



Volta_01



Volta_02



Volta_03

◆ Metabot [Loka]



Loka_01



Loka_02



Loka_03

◆ Metabot [Muke]



Muke_01



Muke_02



Muke_03

◆ Dinobot



Dinobot_01



Dinobot_02



Dinobot_03

◆ Background Image











Thank you.